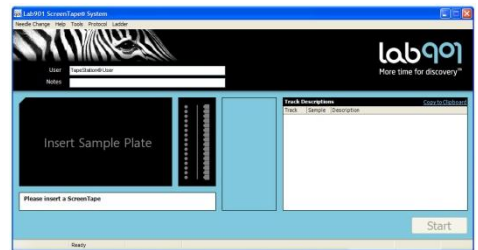


Do not use this guide unless you have read and fully understood the User Manual

ScreenPlex™ Software

1. Sample Preparation

- Initialise the TapeStation™ Controller Software by double clicking the Lab901 icon
- Place 8µL of neat DS12 Ladder into the first tube
- Mix 2µL of PCR product with 6µL of DS12 Loading Buffer
 - ▶ The ladder and samples must be mixed well and located at the bottom of the tube, containing no bubbles
 - ▶ Samples must be freshly prepared before running the TapeStation



2. Sample Loading

- Load the samples, pipette tips and DS12 ScreenTape into the TapeStation
 - ▶ Using the wrong tips and tubes will damage the instrument
- Select the required sample tubes and tests on the controller software
- Press Start and specify a filename with which to save your results
 - ▶ Opening the lid of the instrument after this time will terminate the process
- Notes and track descriptions can be entered manually or by barcode scanner



3. Analysis

- The analysis software will automatically launch and results are saved as an .srf file
- Results can be exported to Excel and Word

