

Do not use this guide unless you have read and fully understood the User Manual

GeneTools Software

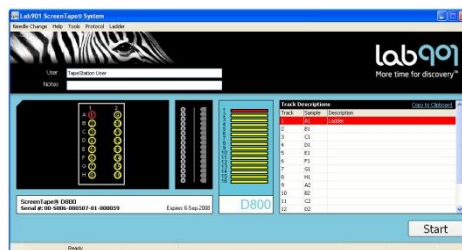
1. Sample Preparation

- Initialise the TapeStation™ Controller Software by double clicking the Lab901 icon
- Place 5µL of neat DNA Ladder into the first tube
- Mix 1µL of sample with 4µL of DNA Loading Buffer
 - ▶ The ladder and samples must be at the bottom of the tube and contain no bubbles



2. Sample Loading

- Load the samples, pipette tips and ScreenTape into the TapeStation
 - ▶ Using the wrong tips and tubes will damage the instrument
- Select the required samples on the controller software
- Press Start and specify a filename with which to save your results
 - ▶ Opening the lid of the instrument after this time will terminate the process
- Notes and track descriptions can be entered manually or by barcode scanner



3. Analysis

- The analysis software will automatically launch and results are saved as an .sgd file
- Results can be exported to Excel and Word

