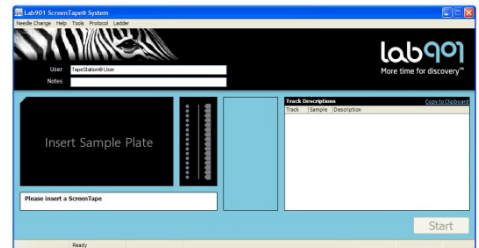


Do not use this guide unless you have read and fully understood the User Manual

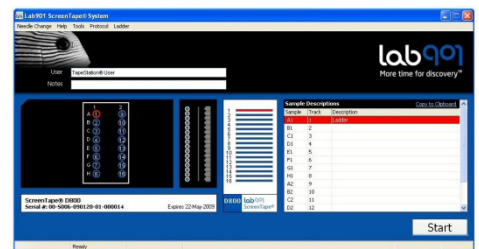
## 1. Sample Preparation

- Initialise the TapeStation® Controller Software by double clicking the Lab901 icon
- Place 4µL of neat DNA Ladder into the first tube
- Mix 1µL of sample with 3µL of DNA Loading Buffer
  - ▶ The ladder and samples must be at the bottom of the tube and contain no bubbles



## 2. Sample Loading

- Load the samples, pipette tips and ScreenTape® into the TapeStation
  - ▶ Using the wrong tips and tubes will damage the instrument
- Select the required samples on the controller software
- Press Start and specify a filename with which to save your results
  - ▶ Opening the lid of the instrument after this time will terminate the process
- Notes and track descriptions can be entered manually or by barcode scanner



## 3. Analysis

- The analysis software will automatically launch and results are saved as an .sgd file
- Results can be exported to Excel and Word

